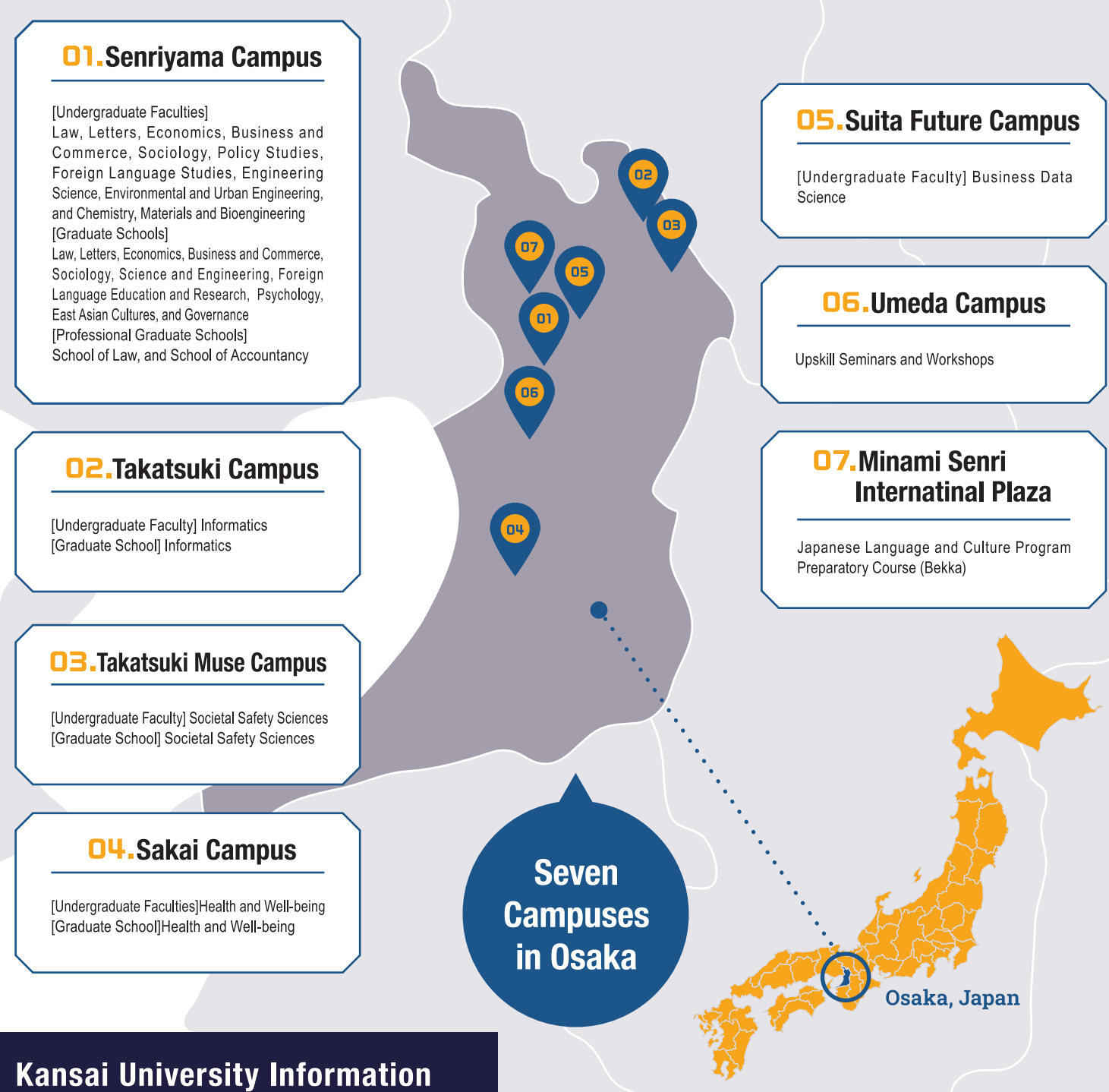


# CAMPUSES

Kansai University (KU) was founded in 1886. KU consists of seven campuses in the Osaka region. Each campus focuses on various specialties and offers undergraduate and graduate programs. These programs offer the necessary learning and living facilities for students to enjoy student life. The following is a list of KU campuses with their Undergraduate Faculties and Graduate Schools. Each KU campus offers easy and convenient access by public transportation.



## Kansai University Information

Establishment	Established 1886	Postal Address	3-3-35 Yamate-cho, Suita City, Osaka, 564-8680 JAPAN
Type	private	Mail	kansai-u1886@ml.kandai.jp
Undergraduate/Graduate School	14 Undergraduate Faculties / 13 Graduate Schools / 2 Professional Graduate Schools	University Web	<a href="https://www.kansai-u.ac.jp/English/">https://www.kansai-u.ac.jp/English/</a>
Student	30,539 (Undergraduate 28,492 / Graduate 2,047) As of May 1, 2025	Division of International Affairs	<a href="https://www.kansai-u.ac.jp/Kokusai/english/">https://www.kansai-u.ac.jp/Kokusai/english/</a>
Partner Universities	220 (as of May 1, 2025)		
Academic Calendar	Spring Semester: April to September, Fall Semester: September to March		



## Earn a Degree at Kansai University

### Obtaining a Degree in Japanese

The number of international students at Kansai University and Kansai University Graduate School is increasing year by year, and excellent people who have studied Japanese culture and academics are thriving in the world. Most of the classes and instruction are conducted in Japanese. Therefore, you must be familiar with the academic Japanese necessary for studying at a Japanese institution, as well as understand general Japanese and be familiar with the technical terms of the subject of your choice.

#### Undergraduate Admission

<https://www.nyusi.kansai-u.ac.jp/admission/foreigner/>



#### Graduate Admission

[https://www.kansai-u.ac.jp/Gr\\_sch/international/index\\_en.html](https://www.kansai-u.ac.jp/Gr_sch/international/index_en.html)



### English-Based Graduate Degree Programs

Kansai University Graduate School offers degree programs in which all classes and research guidance are conducted in English at the following graduate schools:

- Graduate School of Business Commerce (doctoral course)
- Graduate School of Science and Engineering (master's program, doctoral program)
- Graduate School of Societal Safety Sciences (doctoral course)



[https://www.kansai-u.ac.jp/Gr\\_sch/english/eng/](https://www.kansai-u.ac.jp/Gr_sch/english/eng/)

### EMI Subjects: English Medium Instruction

KUGF (Kansai University Global Frontier) courses are classes taught in English. Both domestic and international students can take these courses, which aim to improve language and communication skills, deepen intercultural understanding, and foster global leadership skills.

<https://www.kansai-u.ac.jp/Kokusai/KUGFCourseGuide/2025/>



Module 1 Sustainability Interdisciplinary Approach	Module 2 Applied Science and Engineering	Module 3 International Business and Entrepreneurship	Module 4 Japan Studies
Module 5 Language Teaching and Communication	Module 6 Studies on Global Geopolitics	Module 7 Fundamentals for Social Science Studies	Module 8 Understanding Diversity and Inclusion
Skill Up for Studying Abroad		Japanese as a Second Language	



## Learning Opportunities for Japanese Language and Culture at Kansai University

### Japanese Language and Culture Program Preparatory Course (Bekka)

🕒 Long Term

Kansai University provides education in the Japanese language, Japanese affairs, and Japanese culture to international students who wish to continue on to universities or graduate schools in Japan, primarily at the undergraduate or graduate schools of Kansai University.



<https://www.kansai-u.ac.jp/ku-jpn/English/>



### JLC: Japanese Language and Culture

🕒 Midium and Long Term

The purpose of this course is to teach the Japanese language and Japanese affairs over one or two semesters. Students can take courses from beginner level, who are learning Japanese for the first time, and can take a variety of Japanese studies courses and liberal arts courses on various themes in English.



<https://www.kansai-u.ac.jp/ku-jpn/English/other/jlc.html>



### IJLC Program to learn Japanese Language

🕒 Short Term

This is a course that is held for about two to three weeks in the summer and winter with the aim of deepening understanding of the Japanese language, Japanese culture, society, etc. In addition to learning the Japanese language, you can feel closer to Japan through off-campus trips, Japanese cultural experiences, and interactions with Kansai University students.



<https://www.kansai-u.ac.jp/ku-jpn/English/other/ijlc.html>



### Summer School / Winter School Programs at Kansai University

🕒 Short Term

Kansai University offers programs for students enrolled in universities and graduate schools overseas to learn about Japanese society, culture, and business in English. KU offers two-week and four-week programs in the summer (around July) and two-week programs in the winter (around January). As an option, KU also provides the opportunity to learn introductory-level Japanese.



[https://www.kansai-u.ac.jp/Kokusai/short\\_term/](https://www.kansai-u.ac.jp/Kokusai/short_term/)



## INTERNATIONAL STUDENT DORMITORIES

Refer to the URL for the most updated housing information.

<https://www.kansai-u.ac.jp/Kokusai/Dormitory/en/>

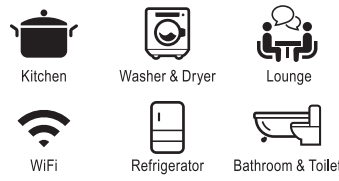


### Global House (KU- G-House)

ALL GENDER UNITS

Dormitory Type	Co-ed dormitory, all gender units, single occupancy rooms
Security	Auto-lock, 24-hour management
Access	About 15 minutes by train

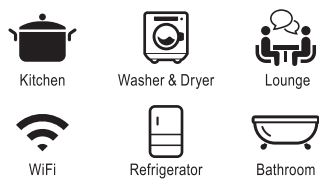
#### Shared Facilities



### Student House Shurei-ryo

Dormitory Type	Co-ed dormitory, single occupancy rooms
Security	Auto-lock, 24-hour management
Access	a 5-minute walk to Senriyama Campus

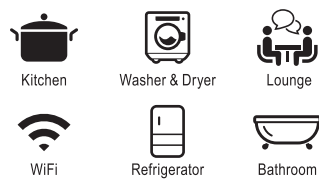
#### Shared Facilities



### Dormitory Tsukigaoka

Dormitory Type	Women's Dormitory, single occupancy rooms
Security	Auto-lock, 24-hour management
Access	a 15-minute walk to Senriyama Campus

#### Shared Facilities



### Minami-Senri International Plaza International Students Dormitory

ALL GENDER UNITS

Dormitory Type	Co-ed dormitory, single occupancy rooms
Security	Auto-lock, 24-hour management
Access	About 15 minutes by train

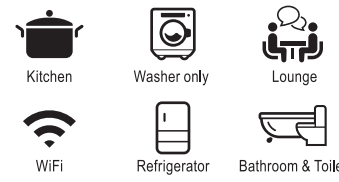
#### Shared Facilities



### KU-I House

Dormitory Type	Co-ed dormitory, single occupancy rooms
Security	Auto-lock, 24-hour management
Access	a 15-minute walk to Senriyama Campus

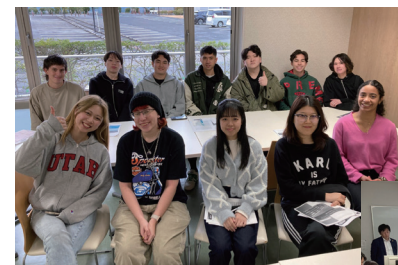
#### Shared Facilities



## DORMITORY LIFE SUPPORT

### Resident Assistants (RAs)

To ensure that residents can live in peace of mind, KU students live alongside international students as resident assistants and support the students' daily lives.



### Human Resources Development Program

We provide opportunities to participate in a variety of human resource development programs exclusive to our residents. Programs such as Global Mind Development and Capstone Project, to name a few.



# Scholarship & Career Support

## Financial Support

Kansai University offers a variety of scholarships exclusively for international students.

("International students" refers to those who hold a "Student" residence status.)

### KU Scholarship

#### Scholarship for newly arriving self-financed international students

Based on the scores of entrance examinations, selection is made, and award notification will be sent before enrollment.

#### Scholarship for international students studying at KU for more than one year

Based on the academic performance after enrollment, selection and determination are made.

Please check the Division of International Affairs website for information on scholarship amounts and academic standards for selection.



<https://www.kansai-u.ac.jp/Kokusai/english/from/support.php>

### Scholarship by External Foundations

There are scholarships available to international students from external foundations. We also encourage you to apply for such scholarships. There are two types.

(i) Kansai University serves as a medium and recommends potential recipients to the foundations in the application process. We solicit applicants to be recommended from within the university for each scholarship, and after selecting applicants based on academic performance and the recommendation conditions of the scholarship, we forward the official applicants to the external foundations for approval.  
(ii) International students may individually apply for scholarships from external foundations. Information for such scholarships is either announced on campus or required to be gathered on their own.

In addition, there are scholarships available to all resident students, including international students enrolled at Kansai University. For details, please see the Scholarship Support Group website.



<https://www.kansai-u.ac.jp/scholarship/system.html>

## Lifelong Career Support SUCCESS

SUCCESS

<https://www.success1.jp/>



Kansai University understands that many international students hope to find employment in Japan after graduation. Japanese companies also want to employ international students who can play an active role on a global scale. However, if you are looking for employment in Japan, you need to understand Japan's unique selection methods and hiring schedules, and thus plan your job search accordingly. For these reasons, Kansai University provides strong support to international students in their job hunting efforts throughout their academic life.



## Kansai University's Mission for International Education means raising global citizens full of human resources.

Kansai University has been selected for two consecutive years, in 2023 and 2024, for a subsidy program implemented by the Ministry of Education, Culture, Sports, Science and Technology. These two programs aim at promoting the internationalization of Japanese universities and contributing to the development of global human resources to tackle social issues.

Through these projects, we are committed to contributing to the development of global human resources and providing high-quality international education programs to nurture resolution skills for social issues while promoting multicultural co-learning.

JIGE Japan hub for Innovative Global Education HELP PROJECT 2023-2026

<https://www.kansai-u.ac.jp/Kokusai/JIGE/en/>



OSIP OFFICE FOR SOCIAL INNOVATION PROJECT

<https://osip.jp/en/>



関西大学 KANSAI UNIVERSITY

# Kansai University

STUDY ABROAD GUIDE

